

MCQs

1. This trace is a short section of a Holter recording of a 6 year old male Boxer where a dysrhythmia had been detected on auscultation. The trace shows 3 leads that were recorded simultaneously.

Describe the trace:

A Sinus rhythm

B Sinus arrhythmia

C Predominantly sinus arrhythmia with a single ventricular premature beat (complex 6)

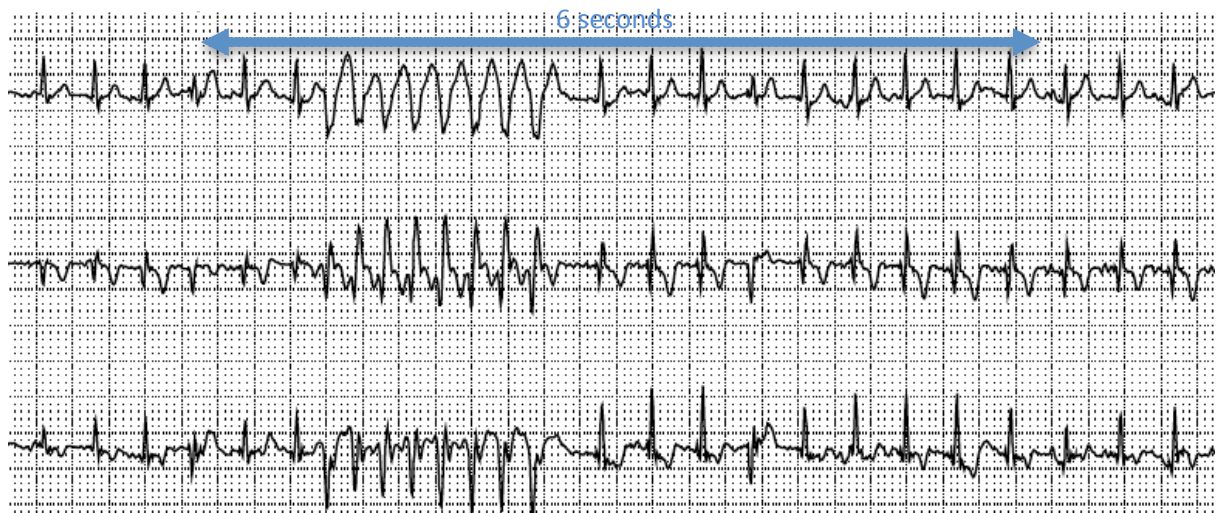
D Predominantly sinus arrhythmia with a single supraventricular premature beat (complex 6)



2. This section of trace from a Holter recording was obtained from a 5 year old male Dobermann with a history of syncope. Syncope did not occur during the recording, the trace shown below shows 3 leads recorded simultaneously and was obtained during a period of exercise hence there is some baseline artefact and variation in QRS height.

Describe the trace:

- A Sinus rhythm with positional change resulting in a change in complex morphology
- B Sinus rhythm followed by a short paroxysm of rapid monomorphic ventricular tachycardia
- C Sinus rhythm with movement artefact caused by dog scratching
- D Sinus rhythm with a short paroxysm of supraventricular tachycardia



Trace courtesy of Dave Fisher, Worcester Vets

3. This section of trace from a Holter recording was obtained from a 5 year old male Labrador with a history of exercise intolerance. Due to the intermittent nature of clinical signs a 7 day recording was obtained and therefore only 2 leads are recorded simultaneously. This trace is taken from day 5 when the dog was panting and recumbent although there was no loss of consciousness.

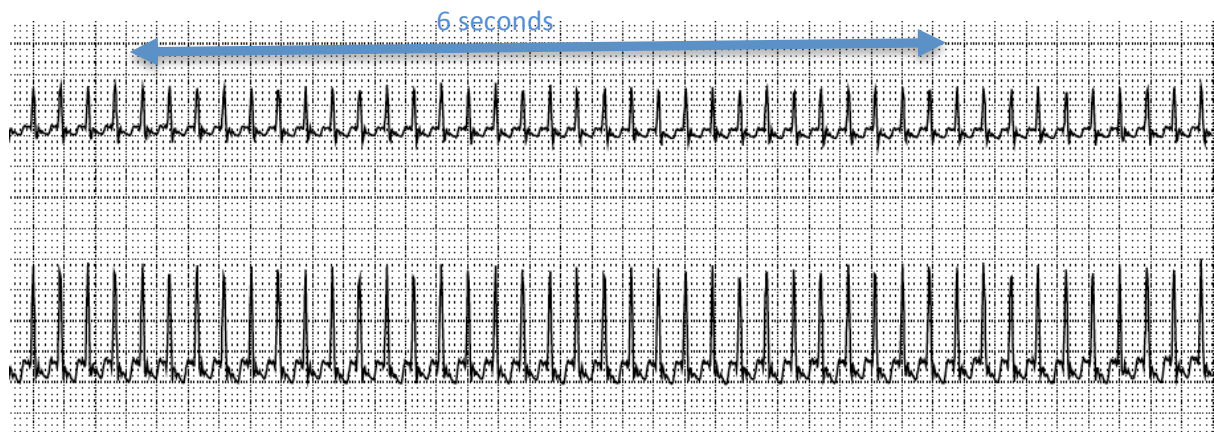
Describe the trace:

A Supraventricular tachycardia

B Ventricular tachycardia

C Sinus rhythm

D Atrial fibrillation



4. This section of trace is an excerpt of a Holter recording from a 9 year old male West Highland White Terrier with a history of syncopal episodes. This trace was obtained during exercise hence the small amount of baseline artefact caused by patient movement.

Describe the trace:

A Sinus rhythm with intermittent examples of second degree atrioventricular block

B Sinus arrhythmia

C Sinus rhythm with occasional ventricular beats

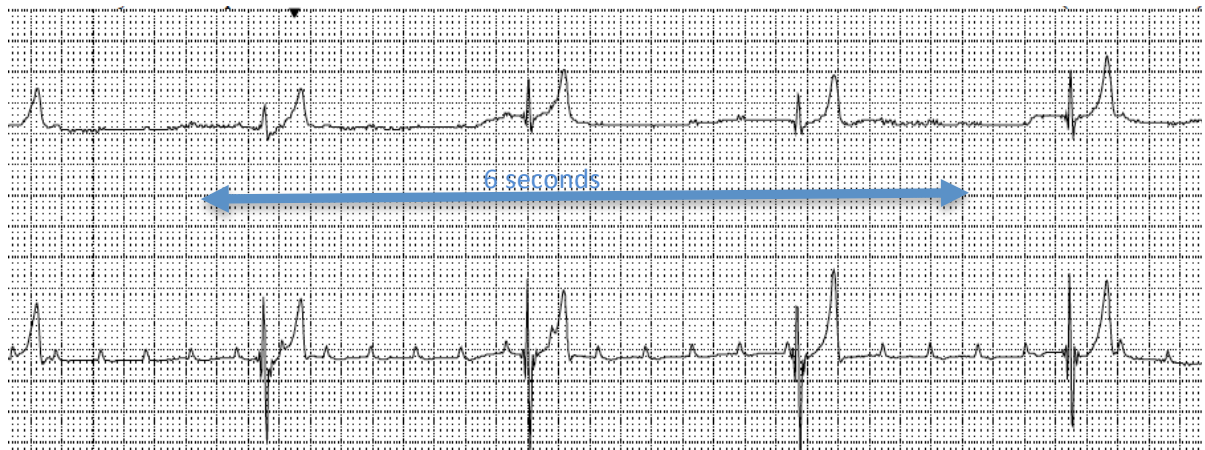
D Sinus rhythm with occasional sinus arrest



5. This section of trace is an excerpt of a Holter recording from a 2 year old female Labrador who had experienced numerous episodes of collapse during the last week. The monitor was set to record for 7 days therefore only two leads are available.

Describe the rhythm seen on this ECG:

- A Sinus rhythm
- B Second degree atrioventricular block
- C First degree atrioventricular block
- D Third degree atrioventricular block



6. This trace is an excerpt from a Holter recording performed on an elderly female West Highland White Terrier suspected of having sick sinus syndrome. Describe the abnormalities seen on the trace:

A Sinus bradycardia

B Sinus rhythm with artefact

C Second degree atrioventricular block followed by >6 seconds of ventricular asystole

D Sinus arrhythmia

